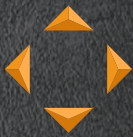


An aerial photograph of a vast solar farm during the golden hour of sunset. The solar panels are arranged in neat, parallel rows across a green field. The sky is filled with soft, orange and yellow clouds, and the sun is low on the horizon, casting a warm glow over the entire scene. In the background, a line of trees and some distant buildings are visible under the twilight sky.

## RENEWABLE ENERGY SERVICES



**INFRA**SOURCE

A QUANTA SERVICES COMPANY



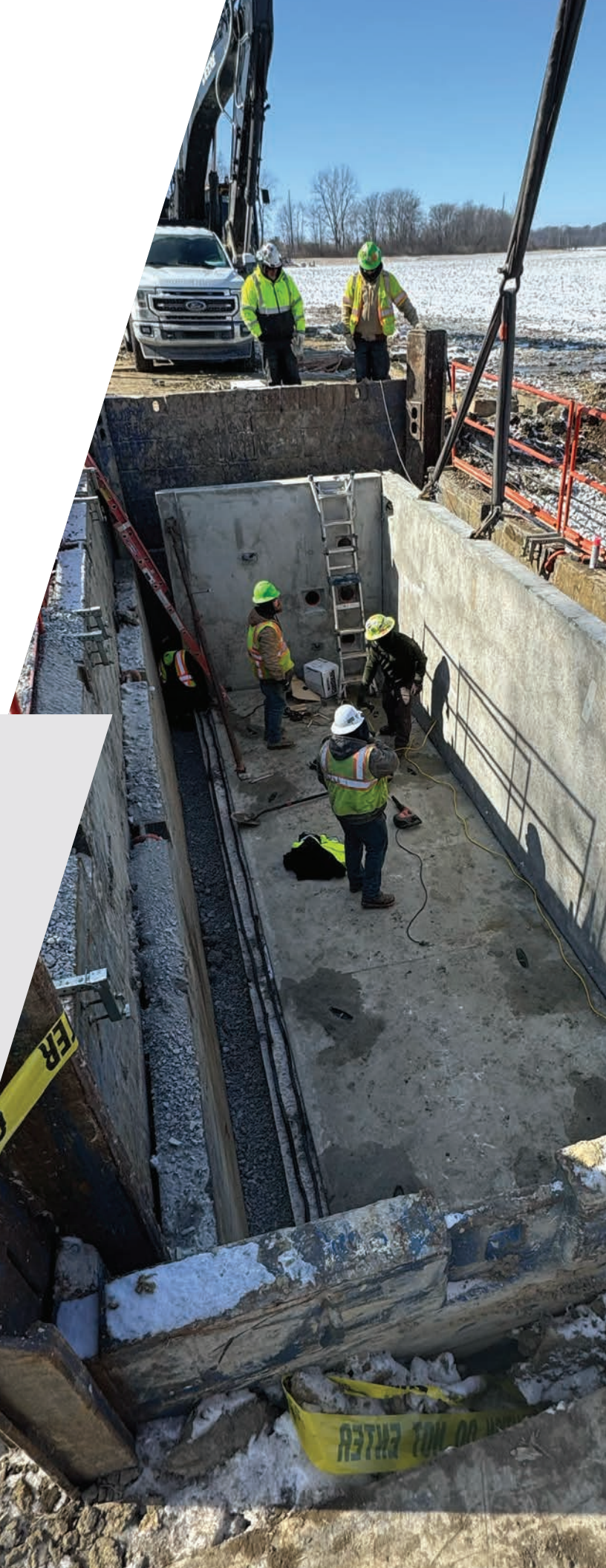
# A FULL-SERVICE PROVIDER.

We deliver comprehensive renewable power construction services designed to meet the growing demands of the energy sector. Safe, reliable, and efficient project delivery is our promise. Specializing in both large-scale transmission networks and local distribution systems, we provide customized solutions tailored to meet the highest industry standards.

## SAFETY TAKES PRECEDENCE OVER ALL BUSINESS PURSUITS AND WORK PRACTICES

InfraSource is committed to the health and safety of our employees, customers, contractors, and the communities in which we work. Our goal is to complete all projects without injuries because it is our duty to do so. We have created an atmosphere in which all of our employees have the opportunity and obligation to take ownership of their own safety and of their coworkers.

We provide and maintain a safe work environment for all our stakeholders so that we can bring all our people home safely each day.





# RENEWABLES – THE FUTURE OF ENERGY, TODAY.

---

InfraSource (IFS) is your trusted partner for utility-scale solar and Battery Energy Storage System (BESS) installations and construction. We specialize in:

## UTILITY-SCALE SOLAR AND ENERGY STORAGE (BESS) CONSTRUCTION

- Solar Power Engineering, Procurement, and Construction (EPC)
- Battery Energy Storage Systems (BESS)
- Renewable Energy Repowering Solutions
- Renewable Energy Source Electrical Services

## CIVIL AND SITE PREPARATION

Our team ensures a solid foundation for your solar installation through comprehensive site preparation, including:

- **Site Assessment and Surveying:** Detailed assessments and surveys to identify optimal locations for solar panel installation.
- **Land Clearing and Grading:** Clearing vegetation and grading land to create a level surface for optimal panel alignment and stability.
- **Trenching and Excavation:** Excavating trenches for electrical conduits and foundations, ensuring proper drainage and soil stability.
- **Foundation Installation:** Installing concrete or driven pile foundations to support the solar racking system.

## RACKING AND INSTALLATION

We provide expert racking and installation services to ensure your solar panels are securely mounted and optimally positioned:

- **Racking System Design and Installation:** Custom-designed racking systems to accommodate various panel sizes and site conditions.
- **Panel Mounting:** Precision mounting of solar panels to maximize sunlight exposure and ensure structural integrity.
- **Electrical Wiring:** High-quality electrical wiring for efficient energy transfer and system reliability.



## HORIZONTAL DIRECTIONAL DRILLING (HDD) FOR CONDUIT INSTALLATION

Our HDD services offer seamless and non-invasive conduit installation:

- **Conduit Installation:** Using HDD technology to install electrical conduits underground, preserving the landscape and minimizing environmental impact.
- **Precision Drilling:** Advanced drilling techniques to navigate various soil conditions for accurate and efficient conduit placement.
- **Conduit Connection:** Securely connecting conduits to the solar panels and the grid.

## GRID CONNECTION

We manage all aspects of grid connection to integrate your solar system seamlessly with the local power grid:

- **Interconnection Planning:** Coordinating with utility companies to ensure compliance with all regulations and standards.
- **Transformer and Inverter Installation:** Installing transformers and inverters to convert solar energy into usable electricity.
- **System Testing and Commissioning:** Thorough testing and commissioning to ensure optimal performance and safety.

## ADDITIONAL SERVICES

We offer a range of supplementary services to support your solar installation project:

- **Permitting and Compliance:** Assisting with obtaining necessary permits and ensuring regulatory compliance.
- **Maintenance and Support:** Providing ongoing maintenance and support for efficient and effective system operation.
- **Energy Storage Solutions:** Integrating energy storage systems to enhance the reliability and efficiency of your solar installation.

## PROJECT HIGHLIGHTS

### MISSION SOLAR

InfraSource installed 59,155 feet of conduit at the Mission Road Solar Park. The installation required navigating various obstacles, including a major interstate, a railroad, bat habitats, drains, gas pipelines, and fiber optic cables.

The completion of the solar bores supports DTE's 158 megawatts of green energy at Mission Road Solar Park, which involves 350,000 solar panels.

### APPLESEED SOLAR UNDERGROUND TRANSMISSION LINE:

InfraSource was responsible for installing a duct bank for the 200 megawatts Appleseed Solar Project. The scope of work included:

- Installing 5,015 feet of conduit duct bank, consisting of four runs of six-inch conduits and two runs of two-inch conduits, with thermal concrete.
- Installing 330 feet of twenty-eight-inch HOBAS casing via Jack and Bore.
- Installing HDPE conduit inside the HOBAS casing and grouting with thermal grout.
- Setting a twenty-eight-foot by eight-foot by eight-foot concrete splice vault.

The underground transmission lines were designed to carry power from the solar farm to the substation.



## INFRASOURCE IS A PARTNER FOR RENEWABLE ENERGY.

Our commitment to innovation and industry-leading resources make InfraSource a trusted partner. We focus on building strategic, long-term relationships with our customers. We do this by delivering construction services with integrity, a commitment to safety, and the promise of quality.

**1954**  
Founded

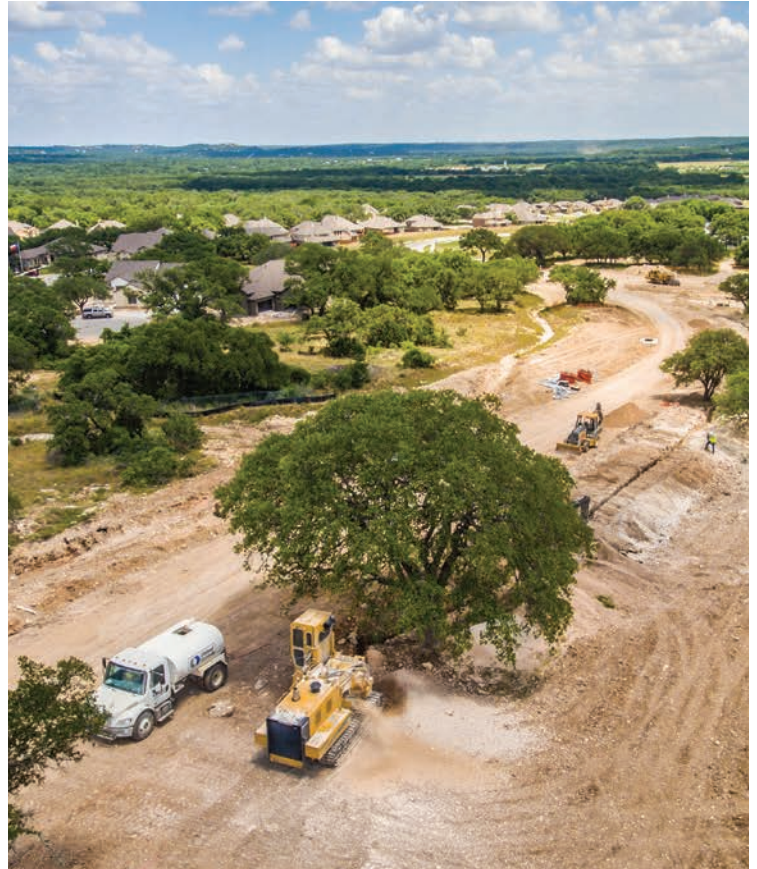
**+168 MIL**  
in Diverse Spend

**+2,600**  
Pieces of Equipment

**20+**  
Strategic Locations

**1,500**  
People Strong

**25**  
Utilities Served



## THE QUANTA ADVANTAGE

Infrasource is a wholly-owned subsidiary of Quanta Services.

Our relationship with Quanta reduces project durations, mitigates risks, and provides collaborative, thorough infrastructure solutions for our clients.

Leveraging Quanta's highly trained workforce, coupled with a fleet of specialized equipment, enables us to successfully complete projects and contracts of all sizes.

**Local Presence and Regulatory Compliance:** Strong local relationships with unions and traffic control authorities facilitate smooth project execution and regulatory compliance.

**Scalability:** Quanta can adjust resource allocation based on project requirements, ensuring efficient use of people power and equipment. Leveraging the knowledge across Quanta's diverse operating units enhances the execution of specialized scopes within projects.



**Largest**

**Employer of union  
and non-union line workers**  
in North America



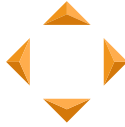
**300+**

**Strategic operating centers**  
across the U.S., Canada,  
and Australia



**Largest**

**Procurer of line trucks**  
in North America



# INFRASOURCE

A QUANTA SERVICES COMPANY

For further information, contact:

InfraSource  
4249 Easton Way, Suite 425  
Columbus, OH 43219

[www.infrasourceus.com](http://www.infrasourceus.com)

## LOCATIONS

### OHIO

**COLUMBUS (Headquarters)**  
4249 Easton Way, Suite 425  
Columbus, OH 43219

### COLUMBIA STATION

27212 Royalton Rd  
Columbia Station, OH 44028

### PENNSYLVANIA

#### ALLENTOWN

7207 Kernsville Rd  
Orefield, PA 18069

### ASTON

146 Conchester Hwy  
Aston, PA 19014

### HARRISBURG

2900 Industrial Road  
Harrisburg, PA 17110

### KING OF PRUSSIA

600 Clark Ave, Suite 3  
King of Prussia, PA 19406

### LAKE ARIEL

1211 Mt Cobb Road  
Lake Ariel, PA 18436

### LANCASTER

200 East Millport Road  
Lititz, PA 17543

### OAKDALE

450 Imperial Industrial Park Dr  
Oakdale, PA 15071

### PLYMOUTH MEETING

1013 Conshohocken Rd  
Plymouth Meeting, PA 19428

1027 Conshohocken Rd

Plymouth Meeting, PA 19428

1300 Conshohocken Rd  
Plymouth Meeting, PA 19428

### SUGARLOAF

855 Main Street  
Sugarloaf, PA 18249

### SUSQUEHANNA

920 Millville Road  
Bloomsburg, PA 17815

### INDIANA

#### COLUMBIA CITY

2299 E Business 30  
Columbia City, IN 46725

### VIRGINIA

#### LORTON

8219 Terminal Rd  
Lorton, VA 22079

8500 Cinder Bed Road  
Lorton, VA 22079

### MICHIGAN

#### ANN ARBOR

2723 South State St, Suite 150  
Ann Arbor, MI 48104

### HAMTRAMCK

6000 Caniff St  
Hamtramck, MI 48212

### MARYLAND

#### BALTIMORE

1405 Benson Court  
Halethorpe, MD 21227

### MASSACHUSETTS

#### WORCESTER

175A Southwest Cutoff  
Worcester MA 01604

## WORLD-CLASS EXECUTION ON A LOCAL LEVEL

